

PORTAMIX™



MIXED BY INNOVATION



MEGA HIPPO

OPERATING & SAFETY INSTRUCTIONS

LANGUAGES



ENGLISH



DEUTSCHE



FRANÇAIS



ESPAÑOL



ITALIANO



NEDERLANDS



SUOMEN KIELI



SVENSKA

PORTAMIX™

FULL-YEAR
WARRANTY

2

WARRANTY REGISTRATION

REGISTER NOW

**THANK YOU FOR JOINING
THE PORTAMIX FAMILY!**

WHAT A GREAT CHOICE!

A couple of minutes and you're done! Register your products with Portamix
for a Full 2-Year Warranty

We know that you will be benefiting from increased productivity and improved everyday
work life like the 100's of other Portamix family members.

When adding a new member to your family you take care of them, just as you will want to take
care of your Portamix Mega Hippo. When reliability and peace of mind matter to you, quality and
trust matter to us, so we offer a premium after-sale service on all Portamix products.



SCAN HERE

portamix.com



**GET YOUR
FREE GIFT!**



**REGISTER YOUR
MEGA HIPPO**

CONGRATULATIONS!

**YOU HAVE PURCHASED THE VERY
BEST MIXING STATION ON THE MARKET.**



IMPORTANT SAFETY INSTRUCTIONS

Important instructions and warning notices are allegorized on the machine by means of symbols:



DANGER—EXPLOSION

Do not use electric motor if explosive or flammable fumes are present or are caused by mixing action. A compressed air powered motor should be used and adequate ventilation provided.



DANGER—SAFETY

The Portamix Hippo is a rotary mixing device. DO NOT put hands or foreign objects into the canister whilst in operation or serious injury may result. Keep hands and other articles well clear of the mixing shaft and canister when mixing.



DUST—EXPLOSION

Some dusts including food and wood dusts are potentially explosive or flammable. Discuss this possibility with the material supplier. Ensure that if required, an appropriately certified dust extraction device is connected to the mixer.



Some products may give off harmful fumes when being mixed. Ensure adequate ventilation is provided. Accurately follow the safety instructions of the material supplier.



Before you start working, read the operating instructions of the machine.



Avoid distractions and keep focused while working. Keep the working area tidy and avoid hazardous situations.



Portamix Mega Hippo motors are fitted with a RCD safety device for your protection.



No liability for the operation or service life of motors not supplied by the manufacturer is accepted.



The use of the mixing unit does not guarantee the performance of materials mixed.



Wear ear protection



Wear goggles



Wear protective gloves

To provide protection against harmful dust within the area of the machine it is recommended that you connect a vacuum cleaner to the canister vacuum port or wear a dust mask.

DO NOT put hands or foreign objects into the canister whilst in operation or serious injury may result. Keep hands and other articles well clear of the mixing shaft and canister when mixing.



DO NOT operate the mixer on an unstable or insecure surface



DO NOT operate the mixer on a sloping surface or on scaffolding



The Portamix Mega Hippo is a rotary mixing device. Operators must ensure that any loose clothing and long hair is firmly tied back. Keep well clear of mixing shafts whilst in operation.



MIXING MOTOR SPECIFICATIONS

Model Number	Volts	Watts	Amps	Hertz	Spindle Connection	Protection Class	IP	Weight	Inference Suppression	Speed One	Speed Two	Speed Three
PH1816S	230	1800	15	50-60	M16	II	20	6.9	EN 55014 and EN 61000	220	670	-
PH1816S-110	110	1800	8.3	50-60	M16	II	20	6.9	EN 55014 and EN 61000	220	670	-
PH2516R	230	2300	10.5	50-60	M16	II	20	7.1	EN 55014 and EN 61000	170	270	390
PH2516-110	110	2500	20	50-60	M16	II	20	7.1	EN 55014 and EN 61000	170	270	390

SAFETY INSTRUCTIONS

Safe work with the machine is only possible if you read this operating instruction completely and strictly follow the instructions.

- Disconnect the mixer from the power source when servicing or cleaning the mixer.
- General safety instructions of the leaflet supplied with the tool must be observed. Prior to the first use, the user should familiarize themselves with the correct operating procedures.
- DO NOT put hands or foreign objects into the canister whilst in operation or serious injury may result. Keep hands and other articles well clear of the mixing shaft and canister when mixing.
- If the power cable is damaged or cut during the mixing, immediately disconnect from power source. Never use the machine with damaged power cable.
- Ensure Protection lid (Code PH718) is fitted correctly to prevent personal injury.
- Do not use the tool in an environment with danger of explosion.
- Do not carry the tool at its cable, and always check the tool, cable and plug before use. Repairs must be carried out by certified service personnel. Only insert the plug into the socket when the tool switch is off.
- Modifications of the tool are prohibited.
- Unplug and switch the machine off if it is not being used e.g. when attaching or removing the motor or mixing paddle.

- Switch the motor off if power supply is disrupted to avoid unintentional start-up when power is turned on.
- Do not use the machine if one part of the housing is damaged or in case of damages on the switch, cable or plug.
- Machine operator must be in good physical condition and mental health and not under the influence of any substance (drugs, alcohol) which might impair vision, dexterity or judgment.
- While working always lead the power cord and extension cord to the back away from the machine.
- Electric tools have to be inspected visually by a specialist in regular intervals.
- Do not touch rotating parts
- During use, the user must wear goggles, ear protectors and protective gloves.
- Ensure the 2 casters with brakes are locked on while loading the mixing canister and during mixing operation.
- Test the motor RCD for correct functionality before starting work.
- It is recommended to connect the Portamix Mega Hippo to a power lead or power outlet fitted with a RCD safety device.

MIXING MOTOR POWER SUPPLY REQUIREMENTS

- Before starting the machine check the correspondence between voltage and frequency according to the data mentioned on the identification plate. Voltage differences from +6% and -10 % are allowed.
- The motor is made in protection class II.
- Only use extension cables with a sufficient cross-section. A cross-section which is too small could lead to an excessive power loss and to an overheating of motor and cable.

Recommended minimum cross sections and maximum cable lengths

Mains voltage	10m cable	30m cable
110V	1.5mm*	2.5mm*
230V	1.5mm*	2.5mm*

*Cross section in sq. mm

SWITCHING ON AND OFF

Switching on:

- Plug motor into the power source
- Set the in line circuit breaker
- Press the on/off switch on motor

Switching off:

- Release the on/off switch
- This will trip the inline circuit breaker eliminating accidental start-up

CHANGING GEARS

PH1816S – 110/240V

Ensure the machine is disconnected from the power supply before changing gears.

The machine is equipped with a mechanical two-speed gearbox. Select the required speed by pressing in and sliding the speed selector until fully engaged.

The position of the lower speed is in, the lower position.

Change the speed only when the machine is not running and assist the speed changing by slightly rotating the mixing spindle by hand to allow gears to change and mesh easily.

Attention:

- Never apply force when changing gear.
- Change the gear only when the motor is stopped.
- Never use tools, such as hammers or pliers to change the gear.

PH2516R – 110/240V

Ensure the machine is disconnected from the power supply before changing gears.

The machine is equipped with a mechanical three-speed gearbox. Select the required speed by rotating the speed selector to the desired gear.

Change the speed only when the machine is not running and assist the speed changing by slightly rotating the work spindle by hand to allow gears to change and mesh easily.

Model Number	Speed One	Second Two	Speed Three
PH1816S-110/230V	220	670	-
PH2516R-110/230V	170	270	390

CARE AND MAINTENANCE

Before the beginning of maintenance or repair works you have to disconnect the plug from the power supply.

Repairs may be executed only by appropriately qualified and experienced personnel. After every repair the machine has to be inspected by an electric specialist. Due to its design, the machine needs a minimum of care and maintenance. However, the following points always have to be observed:

- Always keep the power tool and the ventilation slots clean.

- During work, please pay attention that no particles get inside the machine.
- In case of failure, a repair has to be carried out by an authorised service workshop.
- Ensure wheel brakes are in good condition and function easily.

ENVIRONMENTAL PROTECTION

Before the beginning of maintenance or repair works you have to disconnect the plug from the mains.



Raw material recycling instead of waste disposal

In order to avoid damages on transportation, the power tool has to be delivered in sturdy packing. The packing as well as the tool and its accessories are made of recyclable materials and can be disposed accordingly.

The tool's plastic components are marked according to their material, which makes it possible to remove environmental friendly and differentiated because of available collection facilities.



Only for EU countries

Do not dispose of electric tools together with household waste material!

In observance of European Directive 2012/19/EU on waste electrical and electronic equipment and its implementation in accordance with national law, electric tools that have reached the end of their life must be collected separately and returned to an environmentally compatible recycling facility.

NOISE EMISSION/VIBRATION



Wear ear protectors

The indication of noise emission is measured according to DIN 45 635, part 21. The level of acoustic pressure on the work place could exceed 85 dB (A); in this case protection measures must be taken.

The typical hand-arm vibration is below 2.5 m/s².

Measured values determined according to EN 60 745

Vibration emission value ah 0,8 m/s²

Uncertainty K 0,1 m/s²

The declared vibration emission level represents the main applications of the tool. However if the tool is used for different applications, with different accessories or poorly maintained, the vibration emission may differ. This may significantly increase the exposure level over the total working period. An estimation of the level of exposure to vibration should also take into account the times when the tool is switched off or when it is running but not actually doing the job. This may significantly reduce the exposure level over the total working period. Identify additional safety measures to protect the operator from the effects of vibration such as: maintain the tool and the accessories, keep the hands warm, organisation of work patterns.



DUST PROTECTION

Dust from materials such as cement and flooring compounds may be harmful. Contact with or inhalation of the dust may cause allergic reactions and/or respiratory diseases to the operator or by standers.

Certain kinds of dust are classified as carcinogenic such as silica dust. Material containing asbestos must only be treated by specialists.



DANGER: EXPLOSION.

Some dusts including food and wood dusts are potentially explosive or flammable. Discuss this possibility with the material supplier. Ensure that if required, an appropriately certified dust extraction device is connected to the mixer.

- Ensure Protection lid PH718 is fitted to the canister to prevent dust exposure.
- Where the use of a dust extraction device is possible it shall be used.
- To achieve a high level of dust collection, use an appropriate industrial vacuum cleaner together with this machine.
- The work place must be well ventilated.
- Suitable and compliant dust masks and respiratory protection is recommended.



WARRANTY

According to our general terms of delivery for business dealings, suppliers have to provide to companies a warranty period of 12 months for redhibitory defects (to be documented by invoice or delivery note).

Damages due to natural wear, over stressing or improper handling are excluded from this warranty.

Damage due to material defects or production shall be repaired free of charge at the discretion of Portamix Ltd.

Complaints will be accepted only if the tool is returned in non-dismantled condition to the manufacturer or an authorized Portamix Hippo® service center

DECLARATION OF CONFORMITY



EN 60745

According to the regulations 2011/65/EU, 2004/108/EC, 2006/42/EC





MIXER OPERATION

⚠ Before starting work please ensure:

- The mixer is on a firm surface.
- The motor unit is firmly held in the clamp by tightening the clamp nut.
- The mixing shaft is firmly tightened onto the motor spindle.
- The mounting column is secured in position by the lock pin.
- The wheels brakes are on and locked in position
- The motor RCD safety device is tested for correct functionality before operation.

⚠ The motor unit must be turned off before:

- Changing Gear
- Making any adjustment to the machine
- Dispensing mixed material
- Manually cleaning canister or mixing shaft.

Keep hands and other objects well clear of mixing canister and helix whilst machine is operating.



OPERATING TIPS

- Best results are achieved when:
- Dry ingredients are added **gradually** while the mixer is running.
- Mixing instructions are **accurately** followed.
- The mixing helix is **totally** immersed in the mix.

For Dry Materials To Be Mixed With Liquids:

1. Measure the correct amount of liquids into the mixing canister. Wet the sides of the canister.
2. Run the mixer on low speed.
3. Gradually add the dry ingredients to the liquid. A 20-25 kg bag of dry ingredients should take about 20-30 seconds to pour into the mixing canister in a consistent flow.
4. **Do not dump product in all at once** or a lumpy mixture will result.
5. When three quarters of the dry ingredients have been added to the liquid, the mixer can then be run on high speed.
6. Add the rest of the ingredients. Ensure that the mixing helix is totally covered. It may be necessary to select a mixing shaft with a shorter helix to mix a small batch, or a larger helix to mix a full batch. This will ensure thorough mixing.

⚠ MIXING METHODS

Read material manufacturers mixing instructions before mixing. **DO NOT** mix ignitable or toxic materials. Ensure adequate ventilation is provided.



FOR WET PRE-MIXED PRODUCTS

1. Pour product to be mixed or blended into mixing canister
2. Ensure that the mixing helix is totally covered. It may be necessary to select a mixing shaft with a shorter helix to mix a small batch, or a larger helix to mix a full batch. This will ensure thorough mixing.
3. Pour product to be mixed or blended into mixing canister
4. Select the best speed according to material being mixed. Turn mixer on.
5. When mixing is complete, unplug power supply from motor unit.
6. To dispense mixed material, release the tilt lock by pushing the tilt lock lever down, and tilt the canister cradle. Hold the cradle handle firmly to ensure a controlled pour.

CANISTER REMOVAL

The canister may be removed from the cradle by undoing the canister retaining bolt and lifting the canister



PADDLE OPTIONS



Use the Half-Batch Helix

Use the Half-Batch Helix when mixing 1-3 bags of compound.



Use the Full-Batch Helix

When mixing 4-6 bags of compound.

LINER OPTION

The Mega Hippo has a canister which allows the use of a liner. This liner can be used for mixing all the products that the Mega Hippo is designed to mix. The liner is particularly designed for mixing very abrasive materials or resins

and epoxy materials that require solvent based cleaning products. To fit or remove the liner, remove the motor mount from the mixer, complete with the motor and helix. Lift out or install the liner into the canister.

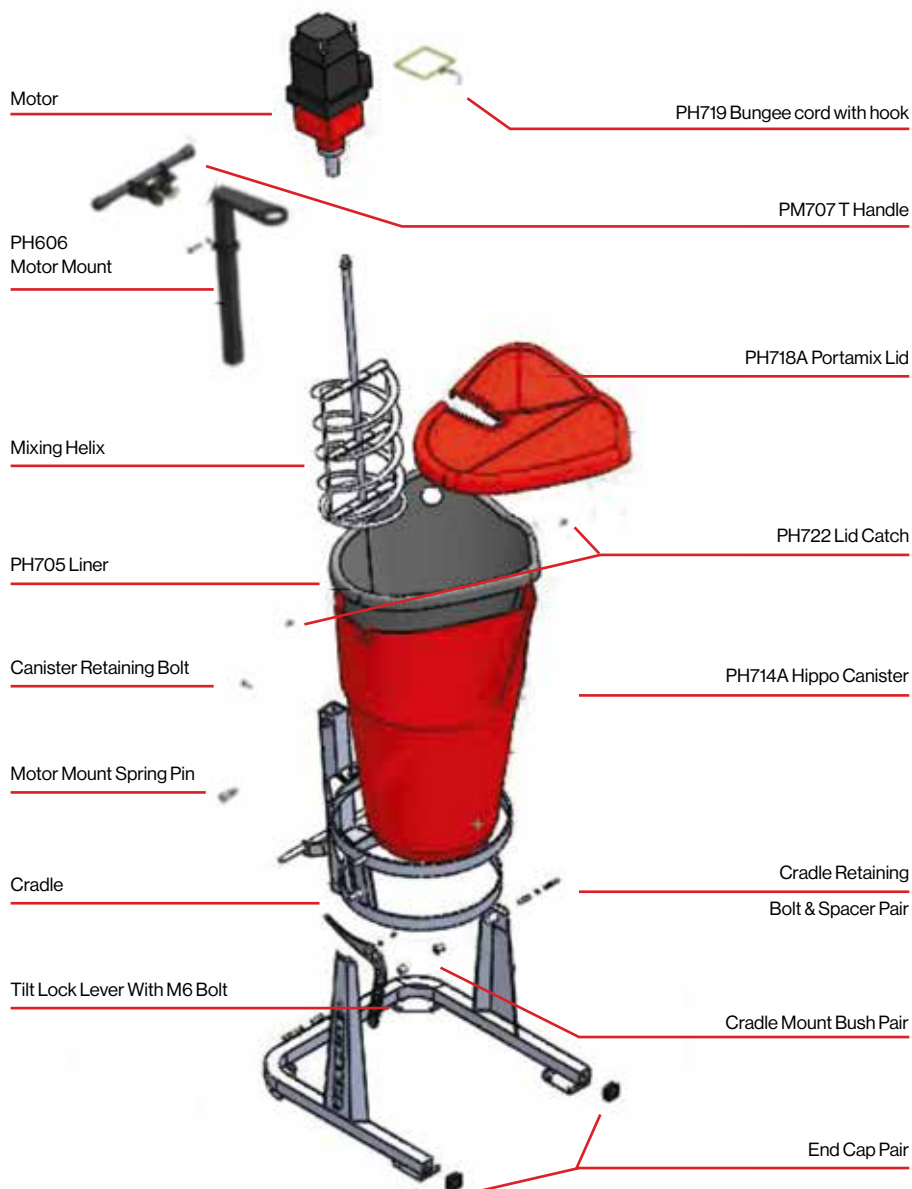
DUST EXTRACTION

The Mega Hippo canisters and liners are supplied with a dust extraction port for attaching a dust extraction hose. The dust port will fit a standard 50mm diameter taper hose cuff.



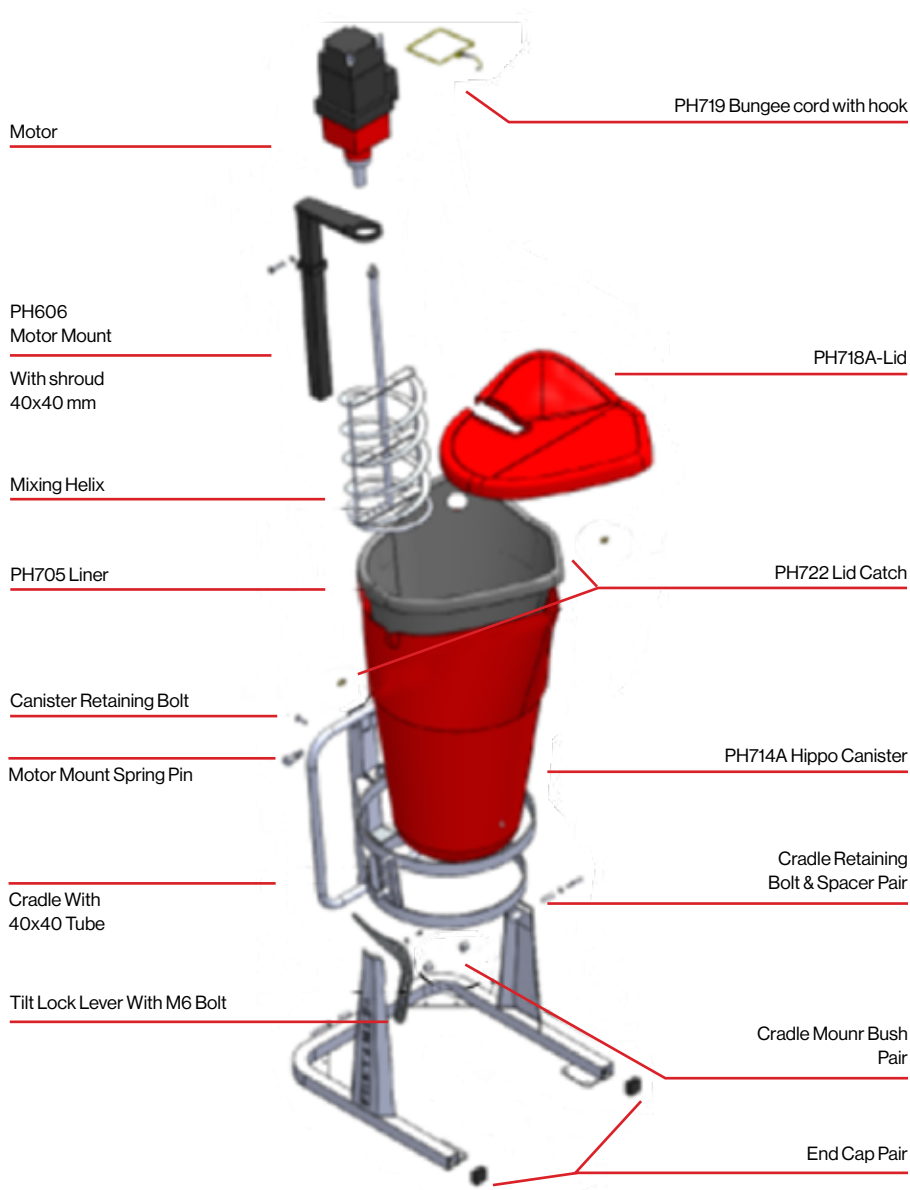
PMHX80

EXPLODED DIAGRAM



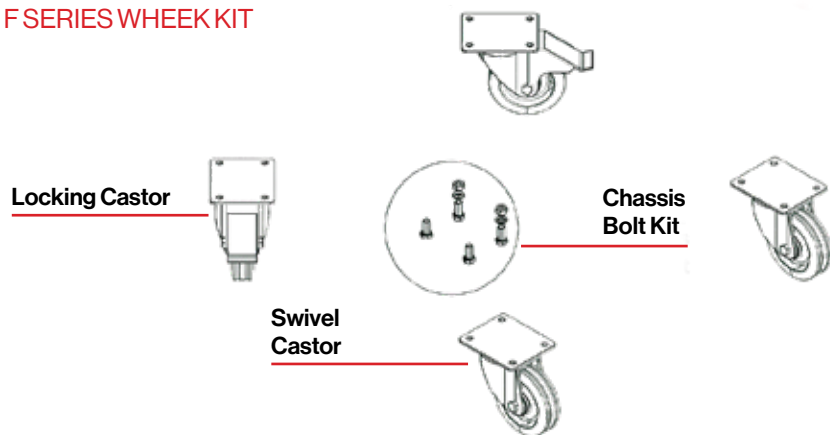
PMH80

EXPLODED DIAGRAM



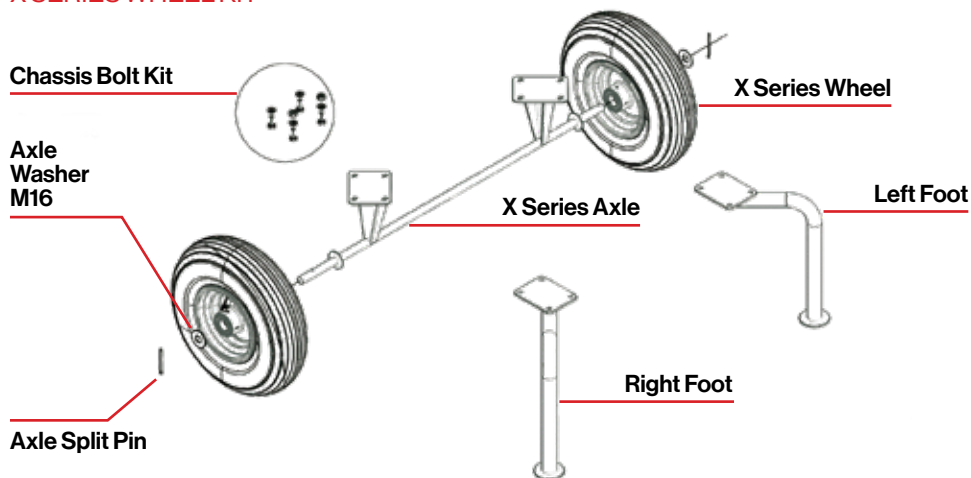
PH400

F SERIES WHEEL KIT



PH500

X SERIES WHEEL KIT





NOTES:

PORTAMIX™



MIXED BY INNOVATION



New Zealand Head Office

+64 6 399 1100

E: sales@portamix.com

W: portamix.com

United Kingdom Office

+44 3300 271880



United States of America Office

+1612 389 9343

portamix.com